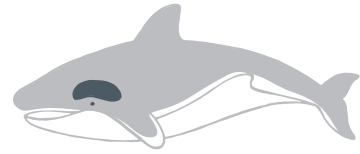
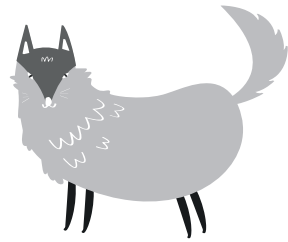


Match the names of these animals with the pictures (draw a line to connect)

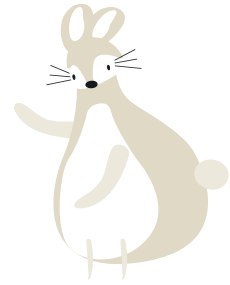
Swan



Wolf



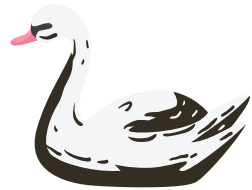
Walrus



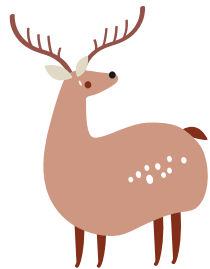
Whale



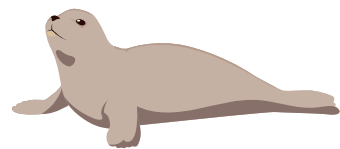
Seal



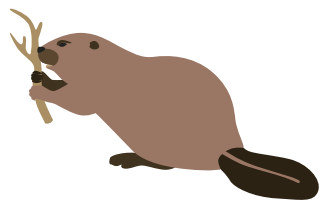
Beaver



Caribou



Muskrat



Arctic Hare



Young Museum Explorer Menu items:
\$7 with water | \$8 with a drink

Includes a side of chips

Chicken Nachos

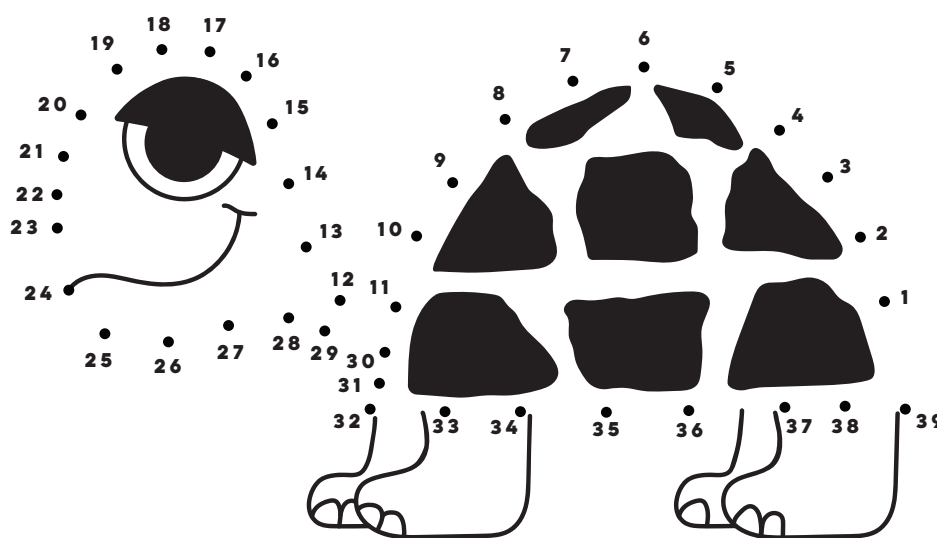
Chicken Tacos – lettuce, tomato

Grilled Cheese Sandwich

Cheese Quesadilla

12 & Under

Animals & Substance of Stars



Put a circle around animals that are diurnal (awake during the day) and a rectangle around animals that are nocturnal (awake at night).

Bear Bluebird Cardinal Skunk

Butterfly Fox Turkey Blackbird

Brown bird Eagle Yellowbird Owl

Bonus: How many of these animals can you find in Substance of Stars?

Diurnal (Circle): Eagle - Turkey - Cardinal - Yellowbird - Blackbird - Bluebird - Brown bird - Butterfly Nocturnal (Rectangle): Owl - Fox - Skunk - Bear

